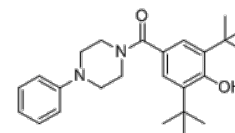


**Product Name** : LQFM215  
**Cat. No.** : PC-21191  
**CAS No.** : 3044047-98-2  
**Molecular Formula** : C<sub>25</sub>H<sub>34</sub>N<sub>2</sub>O<sub>2</sub>  
**Molecular Weight** : 394.56  
**Target** : Monoamine Transporter  
**Solubility** : 10 mM in DMSO



### Biological Activity

LQFM215 (LQFM-215) is a synthetic **L-proline transporter (PROT/SLC6A7)** inhibitor, inhibits proline uptake in hippocampal synaptosome with IC<sub>50</sub> of 20.4 uM, present neuroprotective potential.

LQFM215 (10.0 mg/kg) reduces animal motility, without inducing anxious, depressive behaviors, or cognitive impairments, evaluated in the open-field test in mice.

LQFM215 (10.0 mg/kg) prevents an increase in infarction area and motor impairments in the MCAO model, reduces infarction area and motor impairments in the MCAO model.

### References

Carvalho GA, et al. *Pharmacol Rep.* 2023 Apr;75(2):276-292.

Carvalho GA, et al. *Neurochem Res.* 2023 Sep 9. doi: 10.1007/s11064-023-04018-3.

**Caution: Product has not been fully validated for medical applications. Lab Use Only!**

E-mail: tech@probechem.com